

*Genus:* Santolina

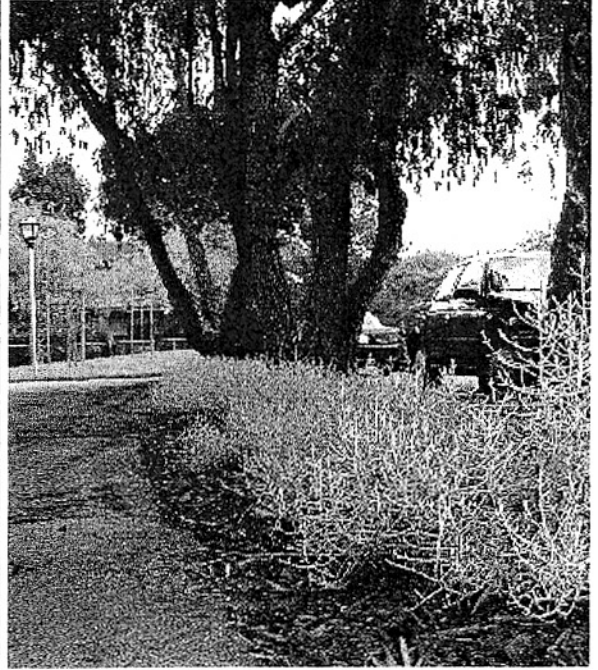
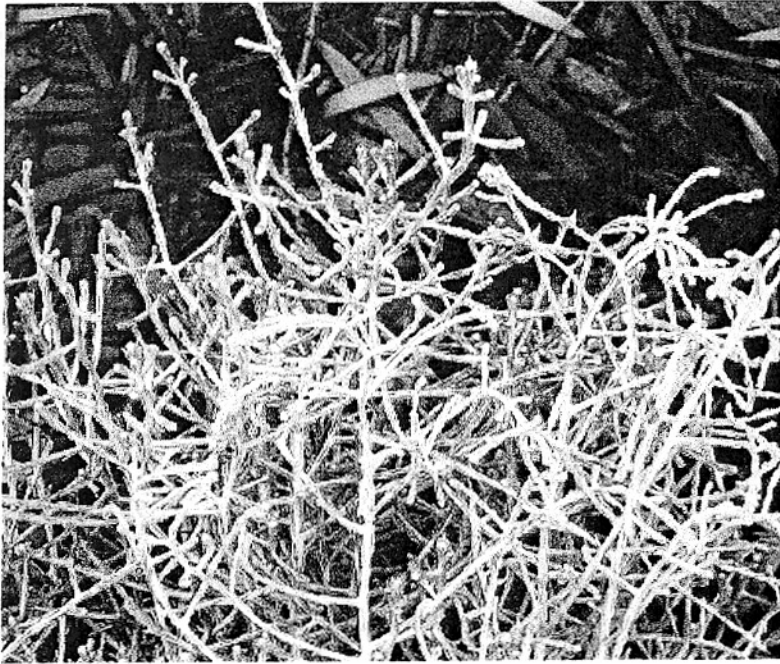
*Common Name:* Lavendar cotton

*Species:* chamaecyparissus

*Cultivar:*

*Origin:* Mediterranean region of Europe

*Family:* Asteraceae



Stanford

*Kind of Plant:* Shrub

*Seasonal Habit:* Evergreen

*Growth Habit:* Sprawling mound

*Height:* 2 ft

*Width:* 3 ft

*Light Needs:* Sun

*Water Needs:* Low - deep monthly watering in 6 hottest months.

*Special Identifying Features*

*Leaves:* Rough, finely divided, whitish gray leaves

*Bark/Twig:* Brittle woody stems

*Flowers:* Bright yellow buttonheads

*Fruit:*

*Disease(s):*

(Refer to Disease and Pest Control chart for treatments.)

*Pest(s):*

*Special Points:*

Cut back yearly before spring growth begins. Fast growth. Often replaced after several years when woody base develops and becomes exposed.

*Campus Location:* 1) Near E.V. Buildings 60 and 61, 2) Waterwise Demonstration Garden - Raimundo near Stanford Ave., 3) Buck Estate